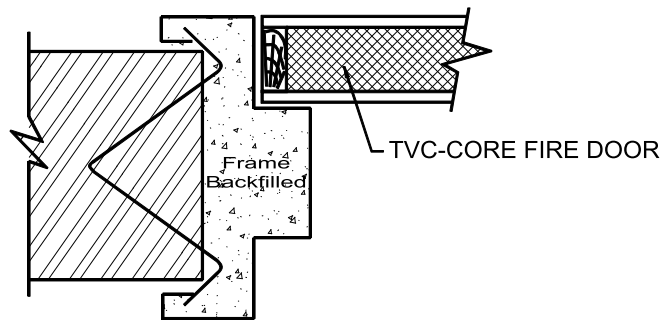


FIRECORE Fire Door Manual

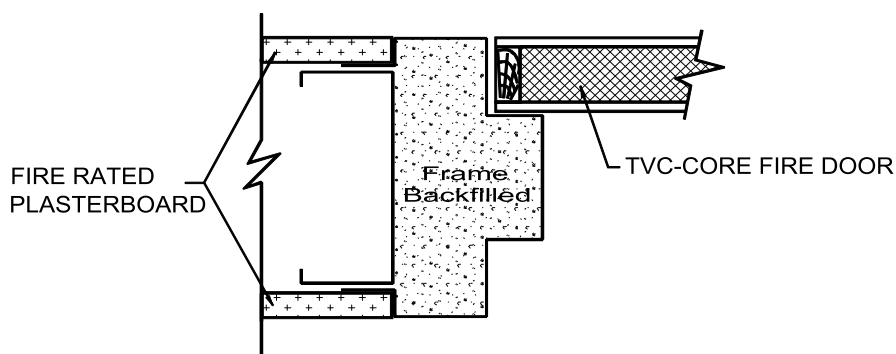
4. Firecore Steel Door Frames Incorporating Various Wall

TVC-Core Metal Door Frame Standard Installation

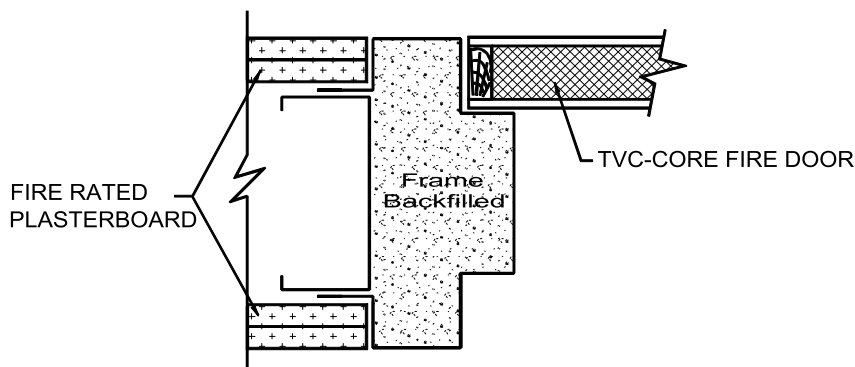
• Masonry Walls - Up to Four Hour



• Plasterboard Partition Walls - One Hour



• Plasterboard Partition Walls - Two Hour



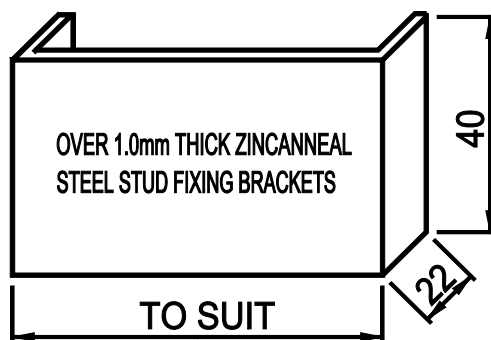
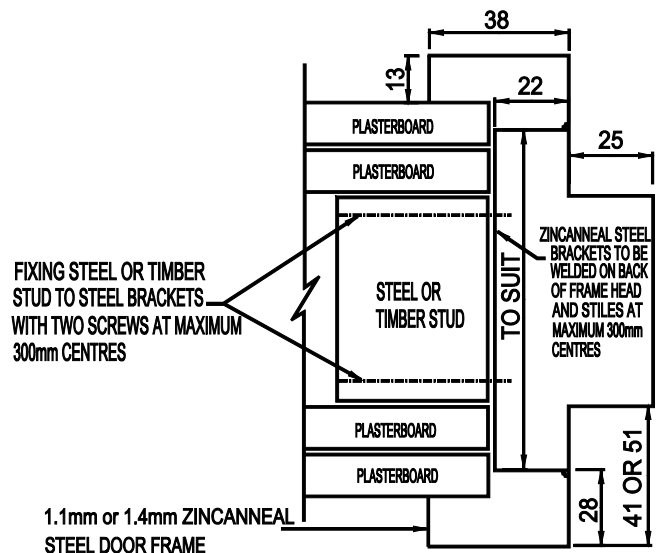
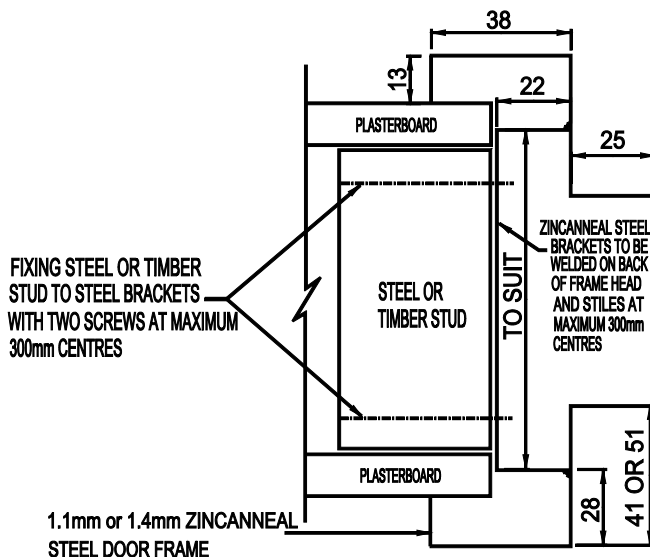
• NOTE

1. Mini Fire Doors – Frames are 1.1mm thick Zincanneal, Galvanized & Stainless Steel door frames and 100mm x 75mm x nom. 2.5mm thick heavy duty hinges to be used
2. Maxi Fire Doors – Frames are 1.4mm thick Zincanneal, Galvanized & Stainless Steel door frames and 100mm x 100mm x nom. 2.5mm thick heavy duty hinges to be used
3. The frames fixed into masonry wall with wire ties **at nominal 400mm center**
4. The frame screws fixed into dry wall **at nominal 300mm center**
5. Steel frame to be backfilled with concrete or mortar into Masonry wall; plasterboard strips & plaster into Plasterboard wall, FCO-2872
6. Fire rated plasterboard be required on plasterboard Partition wall
7. Complies with AS 1905.1-2005 & tested in accordance with AS 1530.4-1997 & AS 1530.4-2005

TVC-Core Metal Door Frame Standard Installation

● TVC-Core Mini & Maxi Door Frame Built into Plasterboard Dry Wall with Fast Fixing Brackets

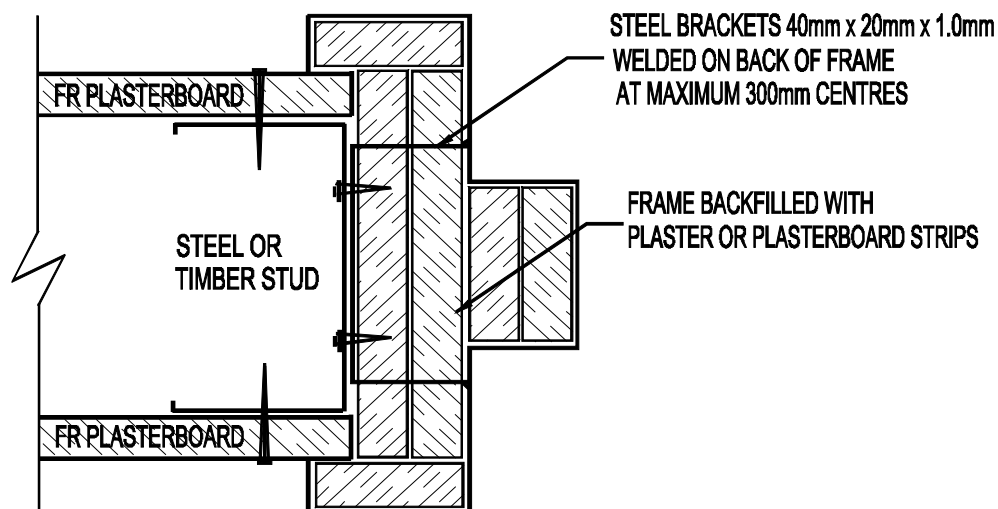
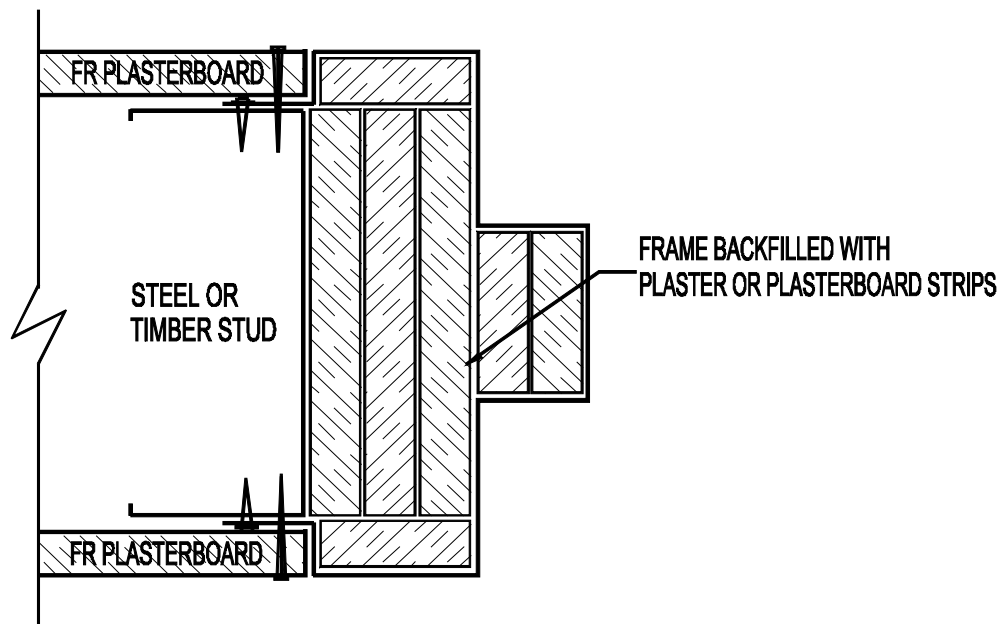
DESCRIPTION	Mini Fire Door Frame	Maxi Fire Door Frame	
Maximum Frame Reveal size (H x W) (mm)	2400 x 1200	2400 x 1200	2400 x 2400
Single or Double Leaf Fire Door Frame	Single	Single	Double
Frame Rebate Size (Depth x width) (mm)	41 x 25	51 x 25	51 x 25
Frame Thickness (mm)	1.1	1.4	1.4
Frame Backfill Requirement	Plaster or Plasterboard	Plaster or Plasterboard	Plaster or Plasterboard
Fire Resistance Level	-/120/30	-/120/30	-/120/30
Bracket Fixing	Steel Brackets to be fixed (welded) at maximum 300mm centre to the frame stiles and head, Screws to be staggered to provide good resistance to twisting		



FCO-2850 & FCO-2872

TVC-Core Metal Door Frame Standard Installation

- **Plasterboard Dry Wall Backfilled with Plaster & Plasterboard Strips**
- **One Hour Plasterboard Wall**

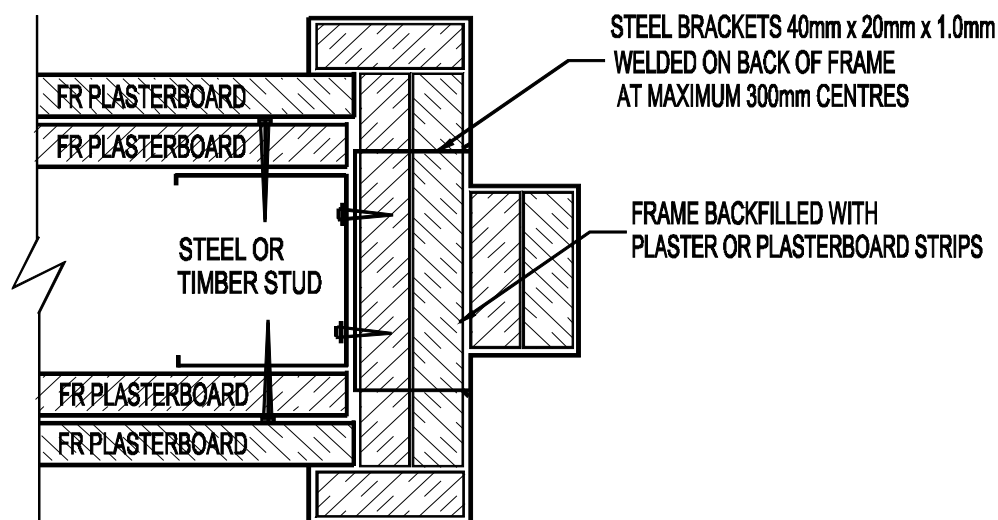
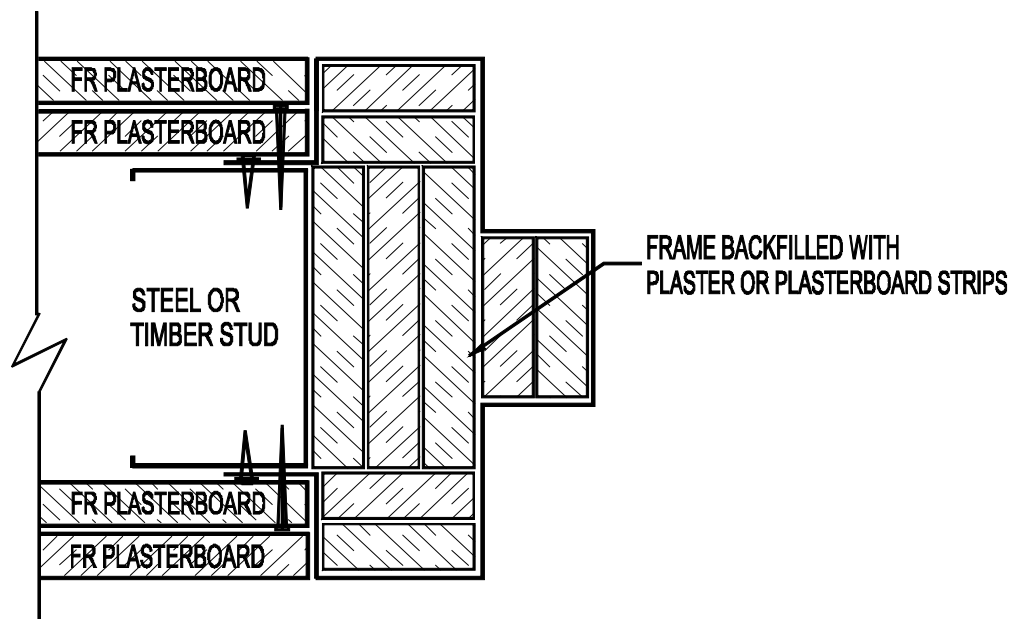


- **NOTE**

1. Mini Fire Doors – Frames are 1.1mm thick Zincaneal, Galvanized & Stainless Steel door frames and 100mm x 75mm x nom. 2.5mm thick heavy duty hinges to be used
2. Maxi Fire Doors – Frames are 1.4mm thick Zincaneal, Galvanized & Stainless Steel door frames and 100mm x 100mm x nom. 2.5mm thick heavy duty hinges to be used
3. Steel frame to be backfilled with plasterboard strips & plaster into Plasterboard wall, FCO-2872
4. Fire rated plasterboard be required on plasterboard Partition wall
5. Complies with AS 1905.1-2005 & tested in accordance with AS 1530.4-1997 & AS 1530.4-2005

TVC-Core Metal Door Frame Standard Installation

- **Plasterboard Dry Wall Backfilled with Plaster & Plasterboard Strips**
- **Two Hour Plasterboard Wall**

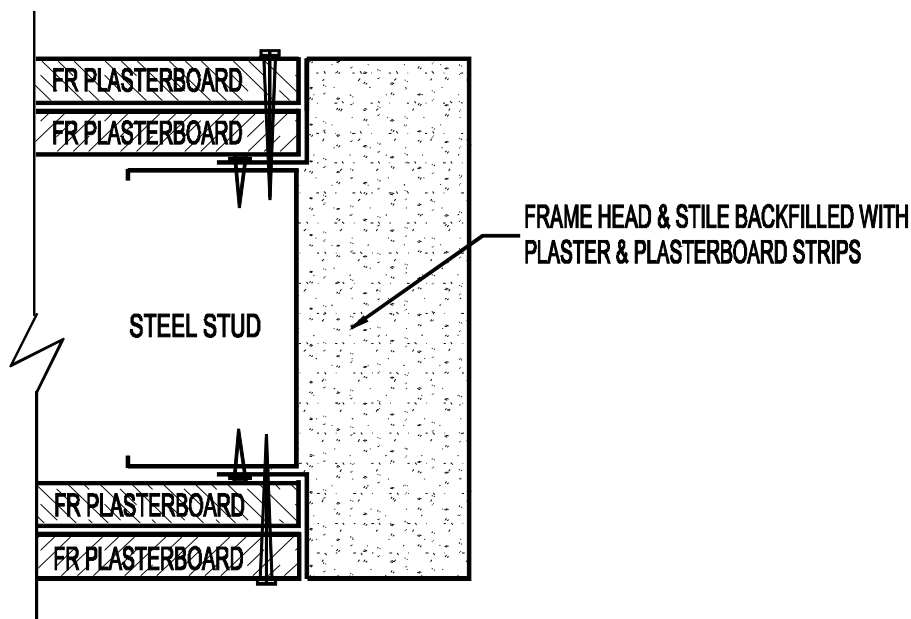
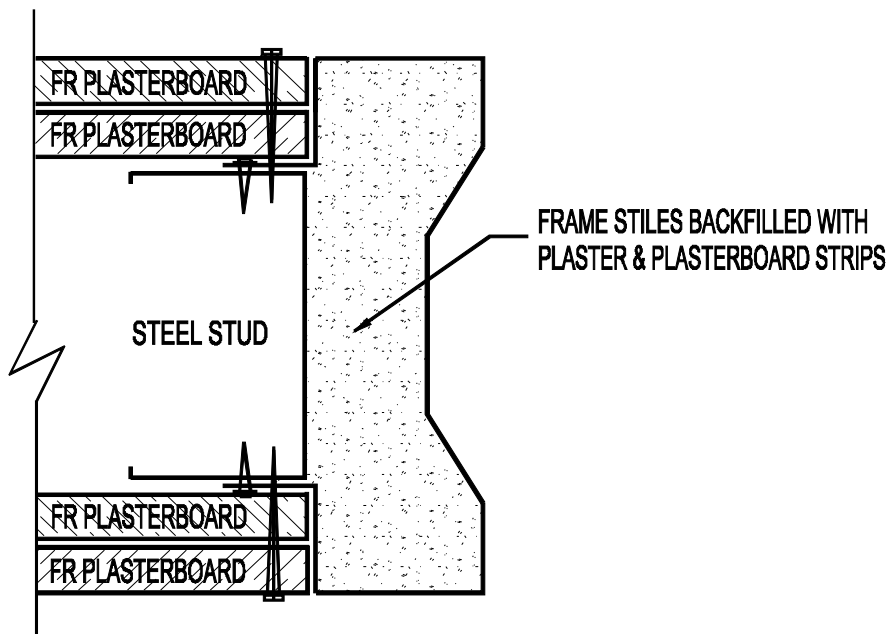


- **NOTE**

1. Mini Fire Doors – Frames are 1.1mm thick Zincanneal, Galvanized & Stainless Steel door frames and 100mm x 75mm x nom. 2.5mm thick heavy duty hinges to be used
2. Maxi Fire Doors – Frames are 1.4mm thick Zincanneal, Galvanized & Stainless Steel door frames and 100mm x 100mm x nom. 2.5mm thick heavy duty hinges to be used
3. Steel frame to be backfilled with plasterboard strips & plaster into Plasterboard wall, FCO-2872
4. Fire rated plasterboard be required on plasterboard Partition wall
5. Complies with AS 1905.1-2005 & tested in accordance with AS 1530.4-1997 & AS 1530.4-2005

TVC-Core Metal Door Frame Standard Installation

- **Plasterboard Dry Wall Backfilled with Plaster & Plasterboard Strips**
- **Double Action Door Frame build into Plasterboard Wall**

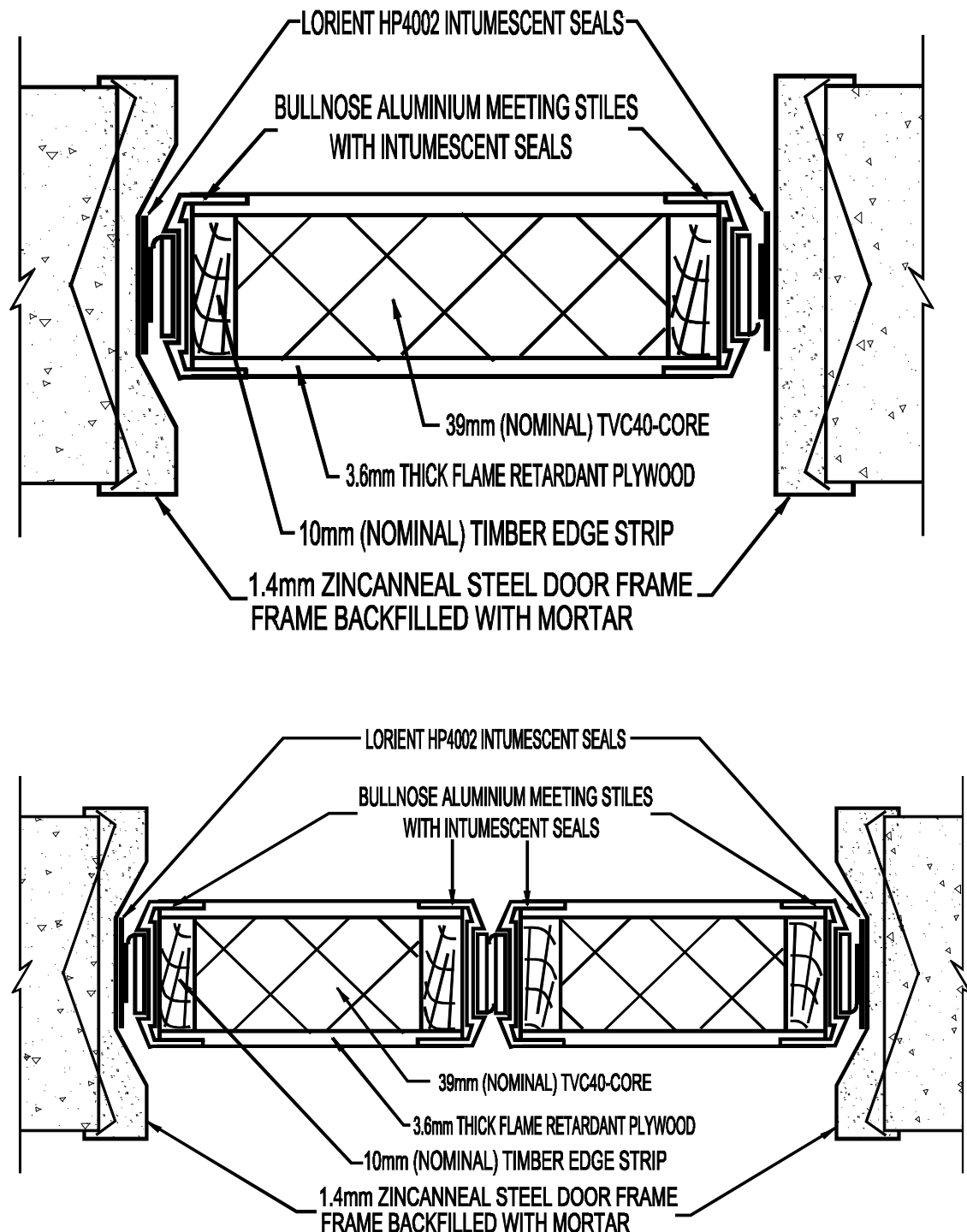


- **NOTE**

1. Frames are 1.4mm thick Zincanneal, Galvanized & Stainless Steel door frames
2. All frames – Head & Stiles to be backfilled with plaster & plasterboard strips, FCO-2872
3. Fire rated plasterboard be required on plasterboard Partition wall
4. Complies with AS 1905.1-2005 & tested in accordance with AS 1530.4-1997 & AS 1530.4-2005

TVC-Core Metal Door Frame Standard Installation

- **Double Action Door Frame build into Masonry Wall**

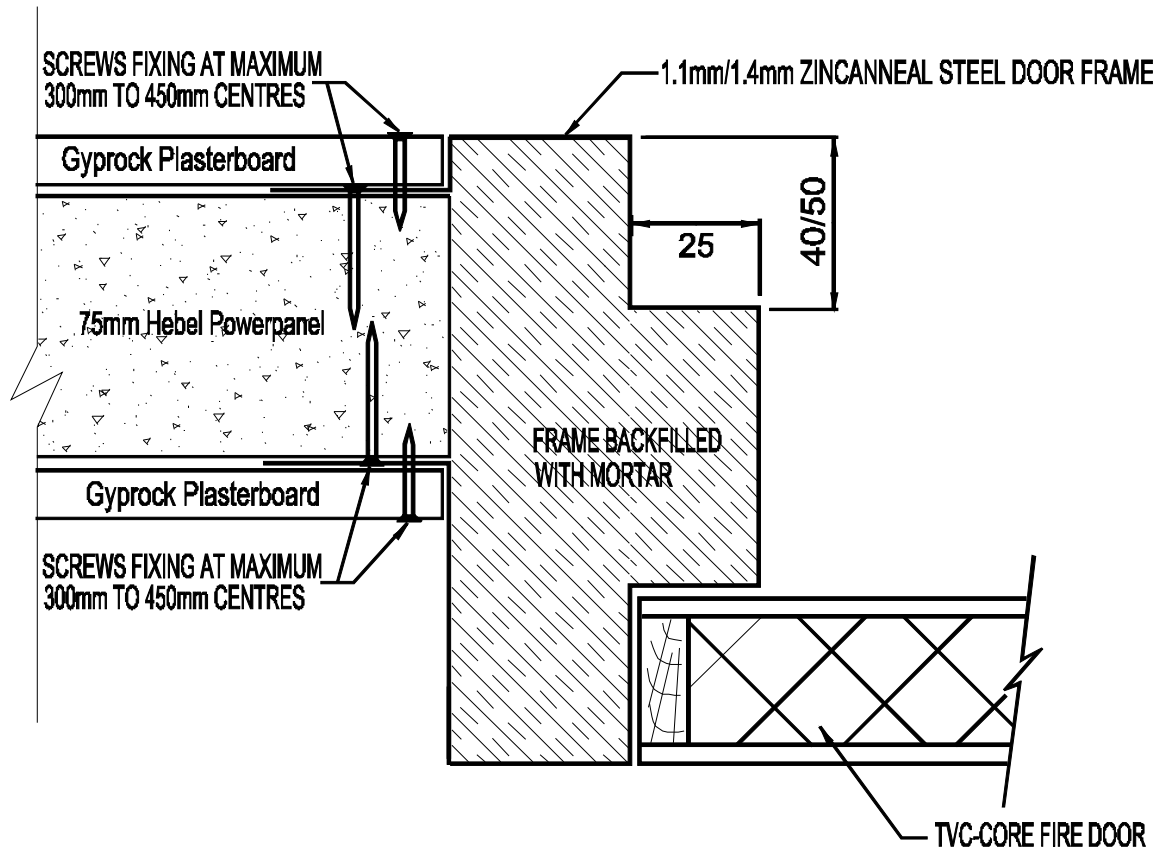


- **NOTE**

1. Frames are 1.4mm thick Zincanneal, Galvanized & Stainless Steel door frames
2. All frames – Head & Stiles to be backfilled with Concrete or Mortar into Masonry wall, FCO-2872
3. Complies with AS 1905.1-2005 & tested in accordance with AS 1530.4-1997 & AS 1530.4-2005

TVC-Core Metal Door Frame Standard Installation

- Hebel Walls - Up to Four Hour**



FCO-2531

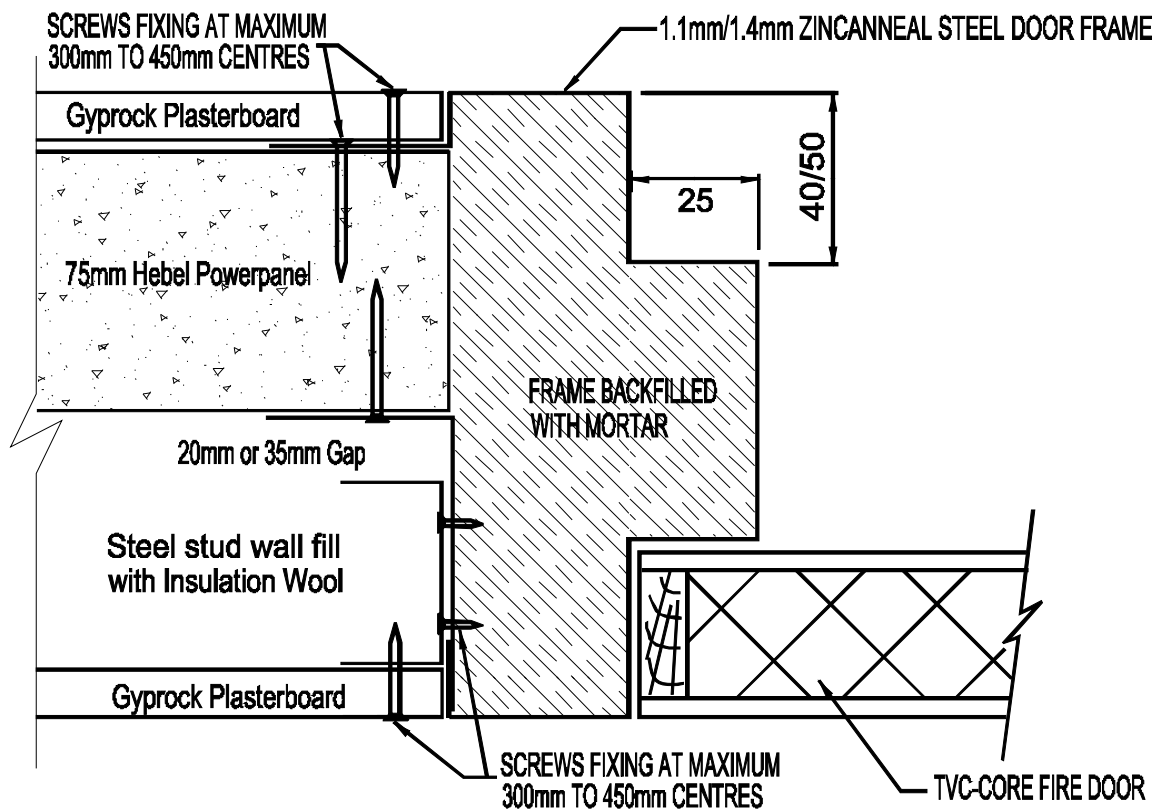
75mm Powerpanel Shaft Wall System

- NOTE**

1. Mini Fire Doors – Frames are 1.1mm thick Zincanneal, Galvanized & Stainless Steel door frames and 100mm x 75mm x nom. 2.5mm thick heavy duty hinges to be used
2. Maxi Fire Doors – Frames are 1.4mm thick Zincanneal, Galvanized & Stainless Steel door frames and 100mm x 100mm x nom. 2.5mm thick heavy duty hinges to be used
3. All frames to be backfilled with Concrete or Mortar, FCO-2872
4. Complies with AS 1905.1-2005 & tested in accordance with AS 1530.4-1997 & AS 1530.4-2005

TVC-Core Metal Door Frame Standard Installation

- Hebel Walls - Up to Four Hour**



FCO-2531

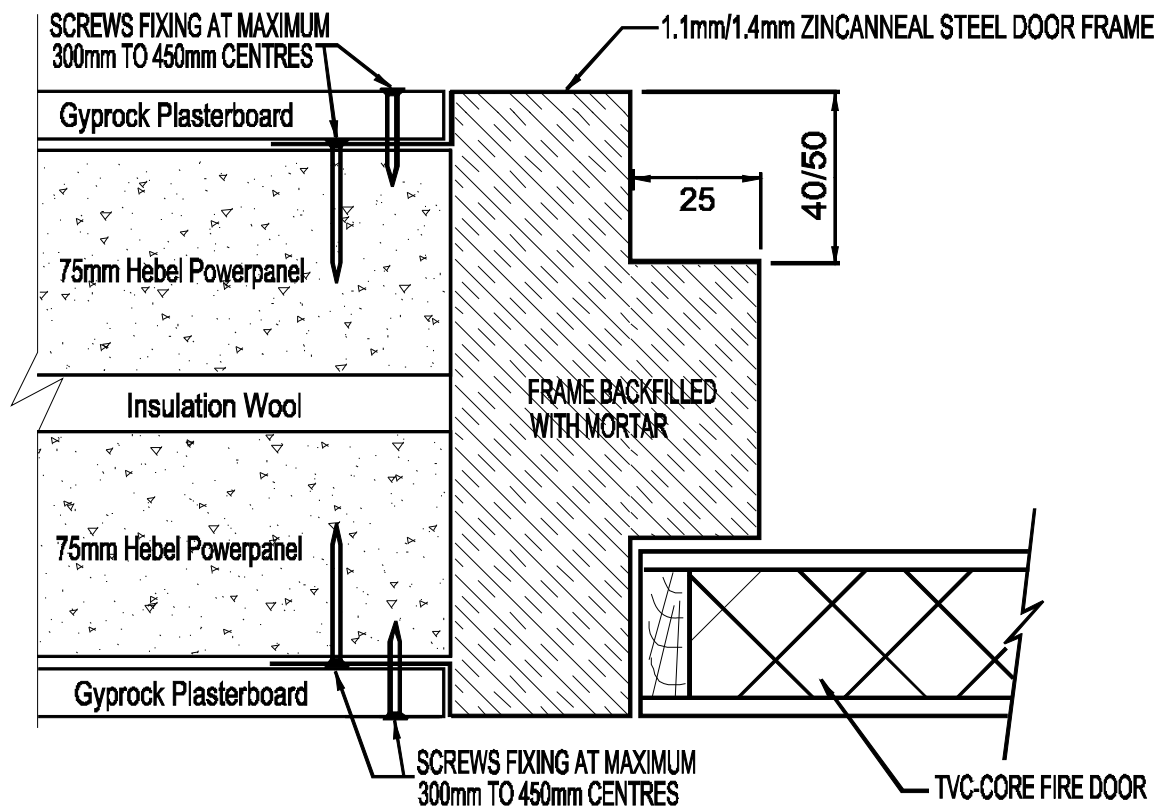
75mm Powerpanel with Separated Stud Wall System

- NOTE**

1. Mini Fire Doors – Frames are 1.1mm thick Zincanneal, Galvanized & Stainless Steel door frames and 100mm x 75mm x nom. 2.5mm thick heavy duty hinges to be used
2. Maxi Fire Doors – Frames are 1.4mm thick Zincanneal, Galvanized & Stainless Steel door frames and 100mm x 100mm x nom. 2.5mm thick heavy duty hinges to be used
3. All frames to be backfilled with Concrete or Mortar, FCO-2872
4. Complies with AS 1905.1-2005 & tested in accordance with AS 1530.4-1997 & AS 1530.4-2005

TVC-Core Metal Door Frame Standard Installation

- Hebel Walls - Up to Four Hour**



FCO-2531

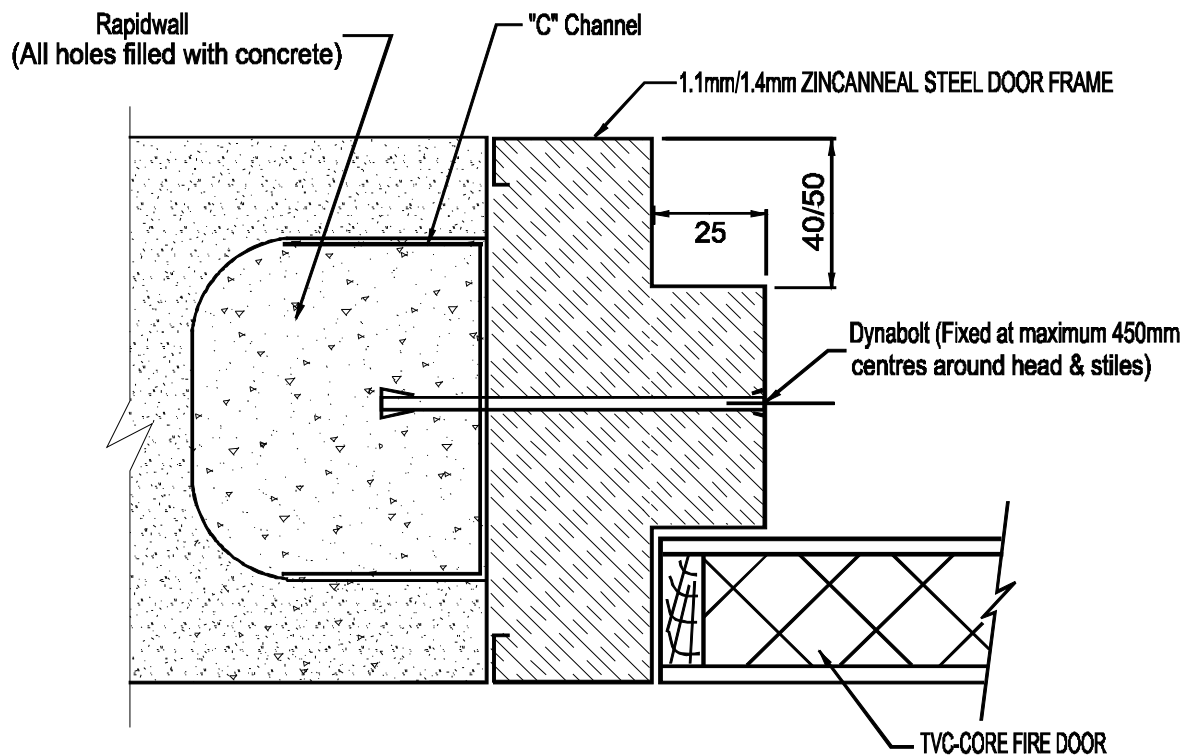
75mm Powerpanel Powerpanel Wall System

- NOTE**

1. Mini Fire Doors – Frames are 1.1mm thick Zincanneal, Galvanized & Stainless Steel door frames and 100mm x 75mm x nom. 2.5mm thick heavy duty hinges to be used
2. Maxi Fire Doors – Frames are 1.4mm thick Zincanneal, Galvanized & Stainless Steel door frames and 100mm x 100mm x nom. 2.5mm thick heavy duty hinges to be used
3. All frames to be backfilled with Concrete or Mortar, FCO-2872
4. Complies with AS 1905.1-2005 & tested in accordance with AS 1530.4-1997 & AS 1530.4-2005

TVC-Core Metal Door Frame Standard Installation

- **Rapidwall Wall Systems - Up to Four Hour**



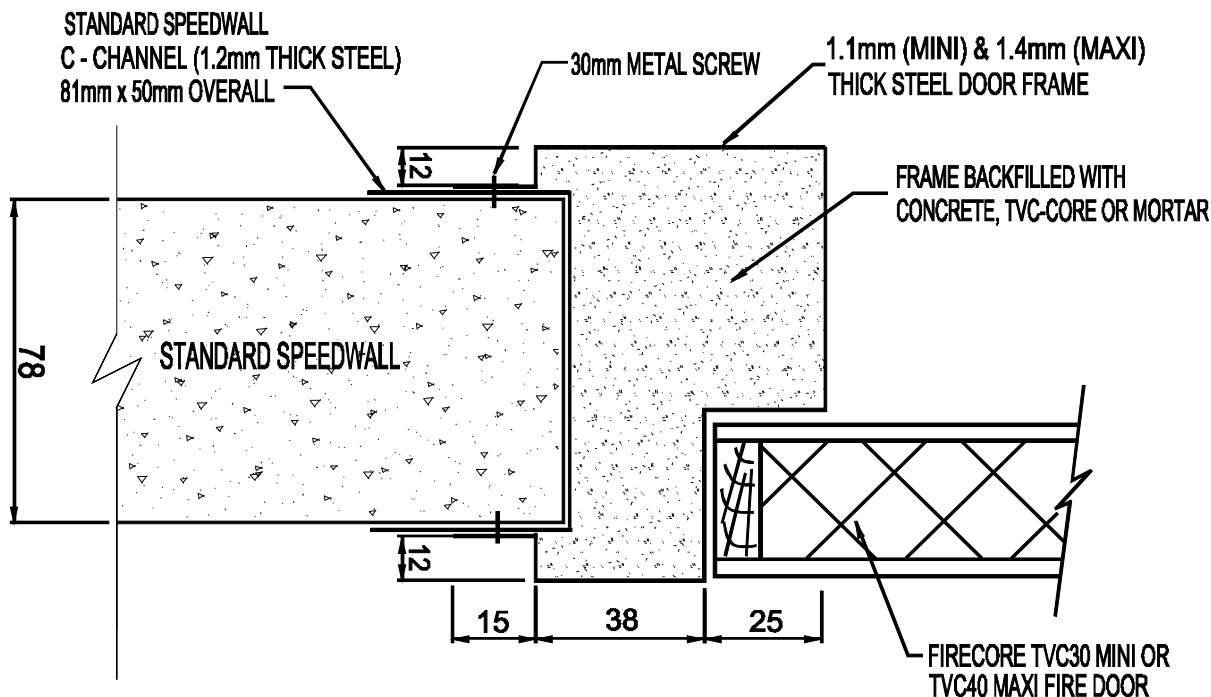
FCO-2531

- **NOTE**

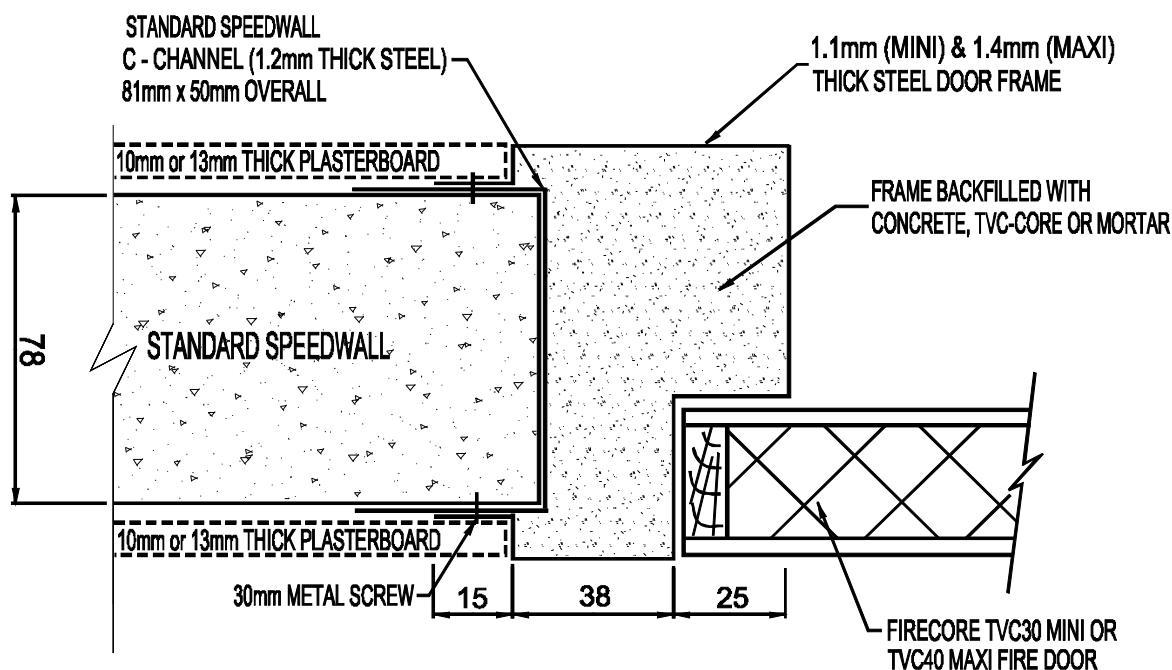
1. Mini Fire Doors – Frames are 1.1mm thick Zincanneal, Galvanized & Stainless Steel door frames and 100mm x 75mm x nom. 2.5mm thick heavy duty hinges to be used
2. Maxi Fire Doors – Frames are 1.4mm thick Zincanneal, Galvanized & Stainless Steel door frames and 100mm x 100mm x nom. 2.5mm thick heavy duty hinges to be used
3. All frames to be backfilled with Concrete or Mortar, FCO-2872
4. Complies with AS 1905.1-2005 & tested in accordance with AS 1530.4-1997 & AS 1530.4-2005

TVC-Core Metal Door Frame Standard Installation

• Speedpanel Wall Systems - Up to Two Hour (FCO-2992)



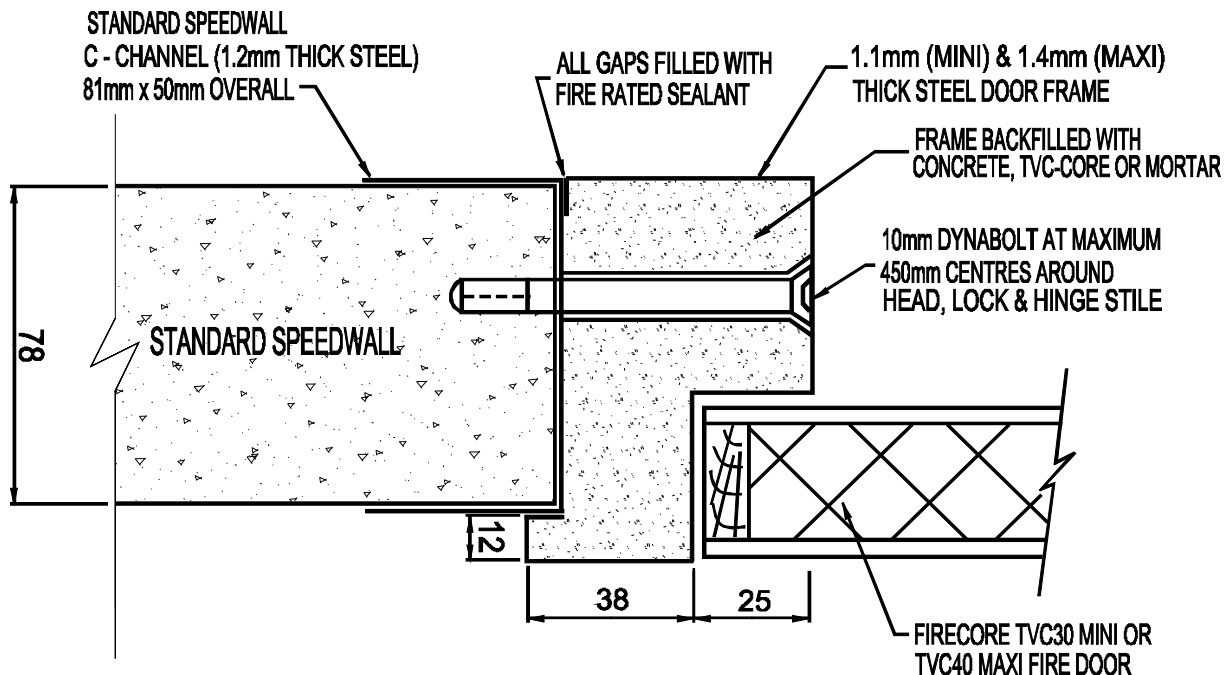
STANDARD SPEEDWALL WITHOUT PLASTERBOARD LINING



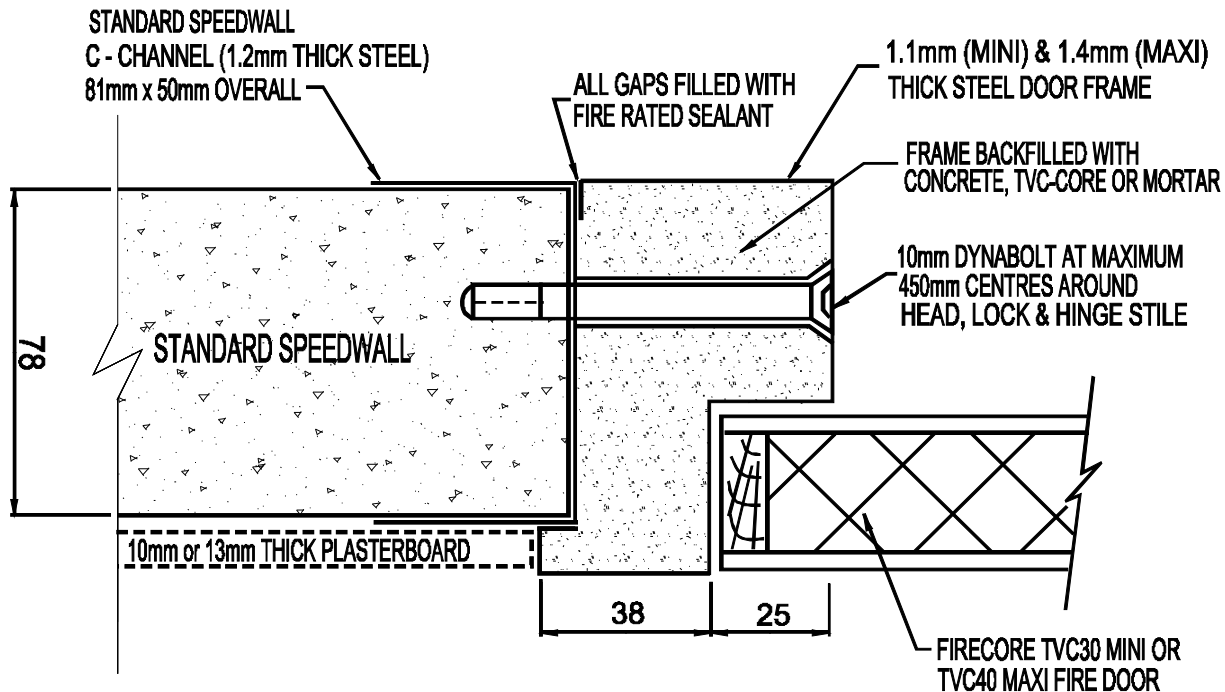
STANDARD SPEEDWALL WITH PLASTERBOARD LINING - ONE OR BOTH SIDES (OPTIONAL)

TVC-Core Metal Door Frame Standard Installation

• Speedpanel Wall Systems - Up to Two Hour (FCO-2992) – con'd



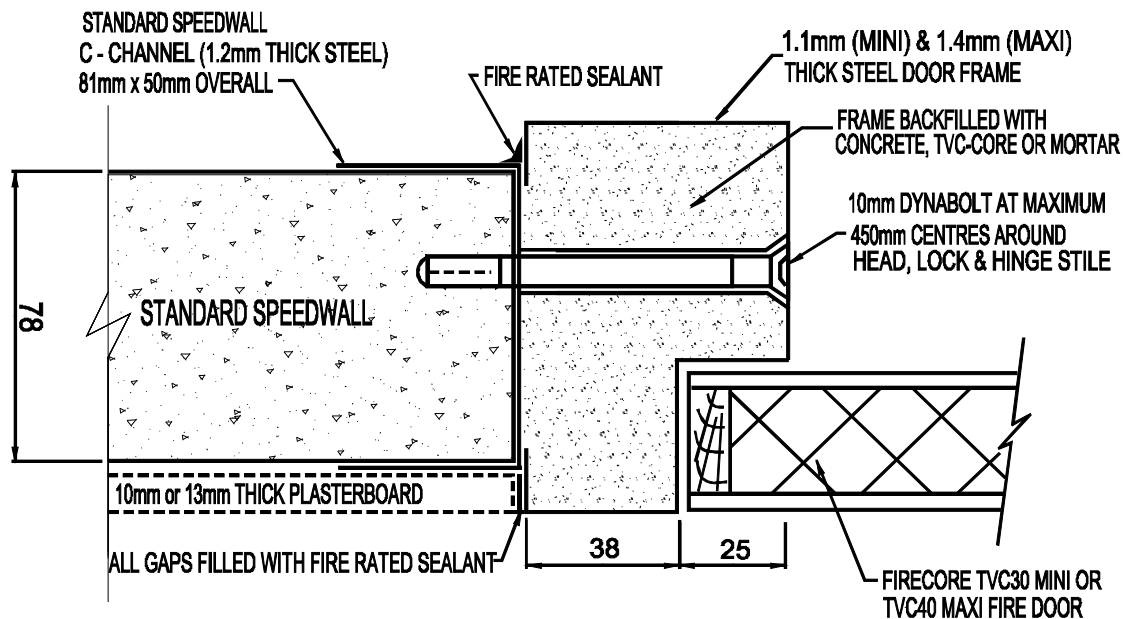
STANDARD SPEEDWALL WITHOUT PLASTERBOARD LINING



STANDARD SPEEDWALL WITH ONE SIDE PLASTERBOARD LINING

TVC-Core Metal Door Frame Standard Installation

• Speedpanel Wall Systems - Up to Two Hour (FCO-2992) – con'd



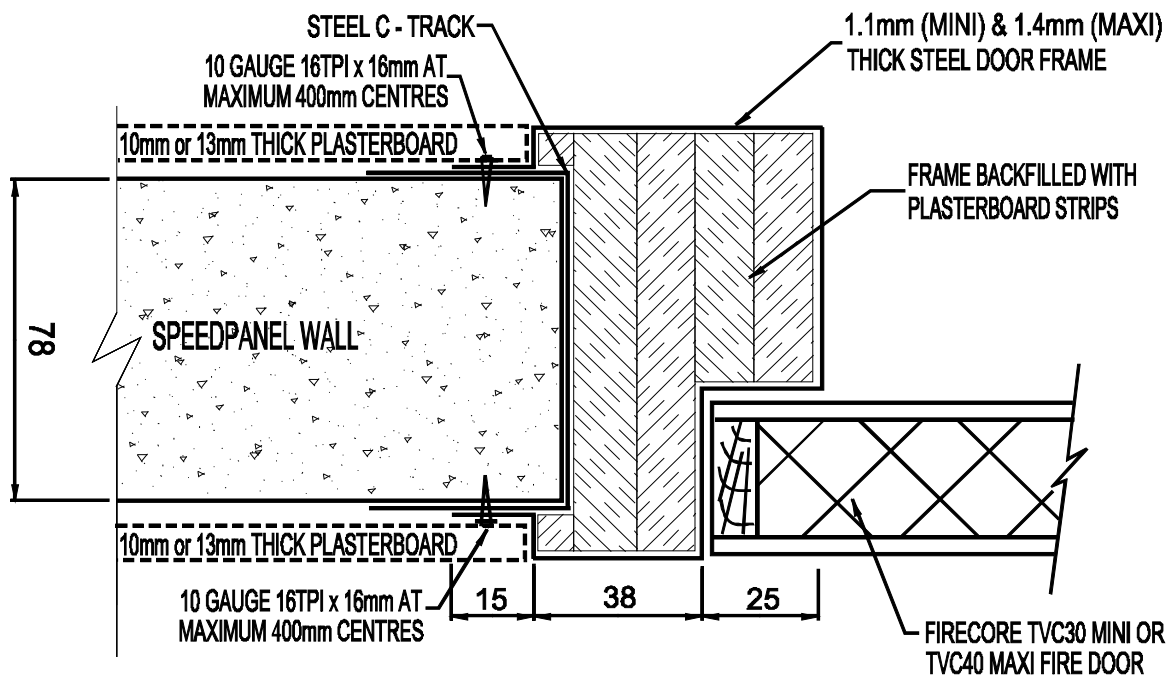
STANDARD SPEEDWALL WITHOUT OR WITH ONE OR BOTH SIDES PLASTERBOARD LINING (OPTIONAL)

• NOTE

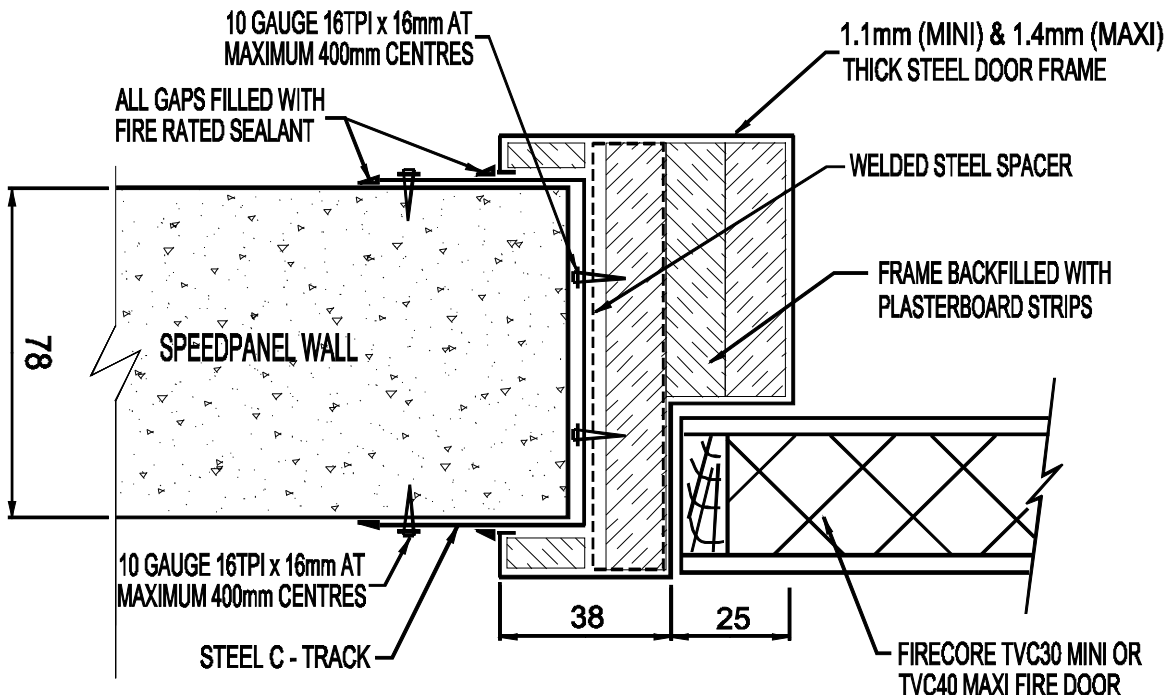
1. Mini Fire Doors – Frames are 1.1mm thick Zincanneal, Galvanized & Stainless Steel door frames and 100mm x 75mm x nom. 2.5mm thick heavy duty hinges to be used
2. Maxi Fire Doors – Frames are 1.4mm thick Zincanneal, Galvanized & Stainless Steel door frames and 100mm x 100mm x nom. 2.5mm thick heavy duty hinges to be used
3. 78mm Thick Speedpanel Wall System - FRL: -/120/30
64mm Thick Speedpanel Wall System - FRL: -/90/30
51mm Thick Speedpanel Wall System - FRL: -/60/30
4. All frames to be backfilled with Concrete or Mortar
5. Complies with AS 1905.1-2005 & tested in accordance with AS1530.4-1997 & AS 1530.4-2005

TVC-Core Metal Door Frame Standard Installation

• Speedpanel Wall Systems - Up to Two Hour (FCO-3110A) – con'd



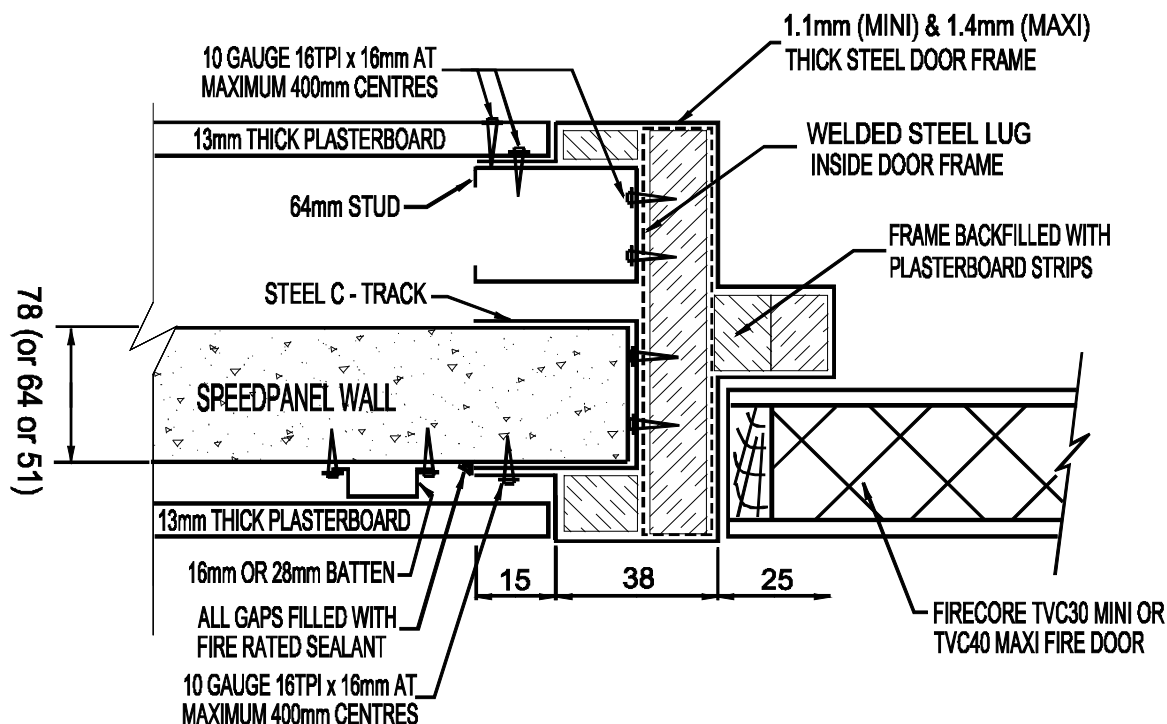
FRAME BUILT-INTO SPEEDPANEL WALL WITH OPTIONAL PLASTERBOARD LINING



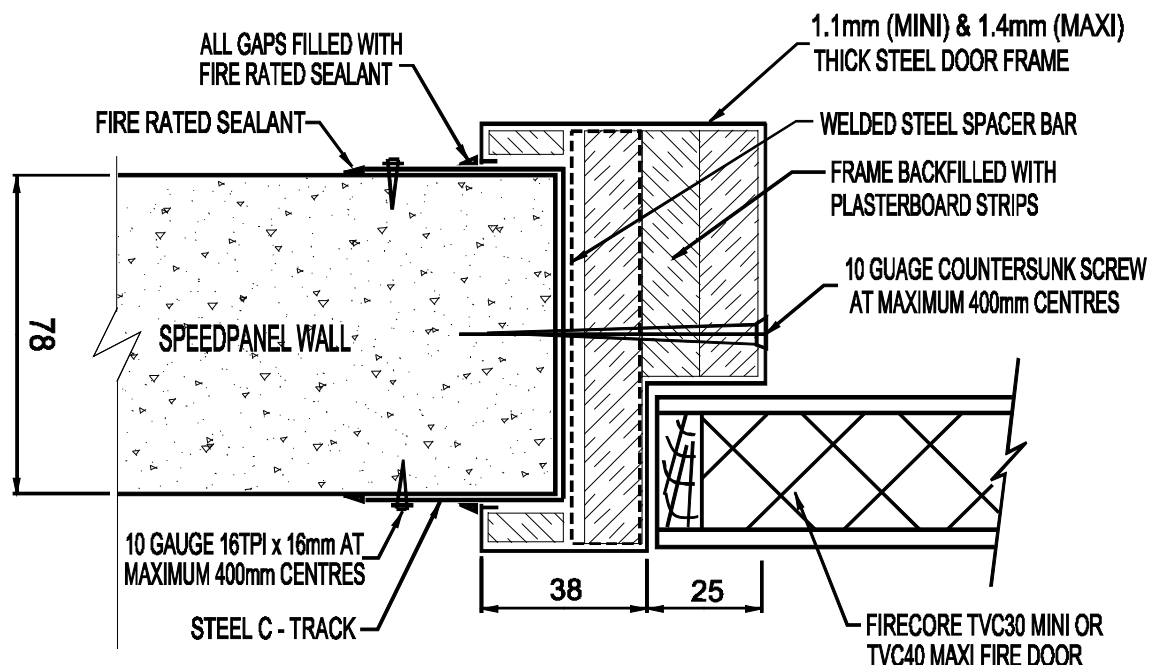
FRAME BUILT-INTO SPEEDPANEL WALL STEEL C-TRACK FIXED TO WELDED STEEL SPACER

TVC-Core Metal Door Frame Standard Installation

• Speedpanel Wall Systems - Up to Two Hour (FCO-3110A) – con'd



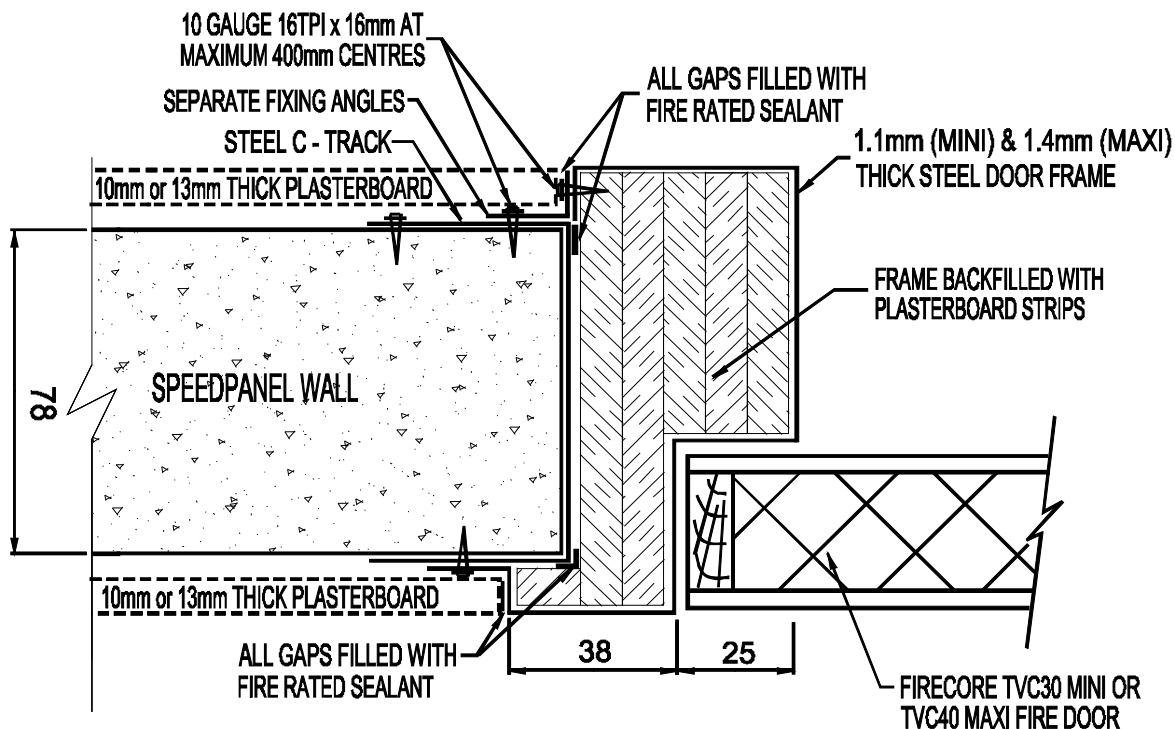
FRAME BUILT-INTO SPEEDPANEL WALL WITH 64mm STUD & PLASTERBOARD LINING



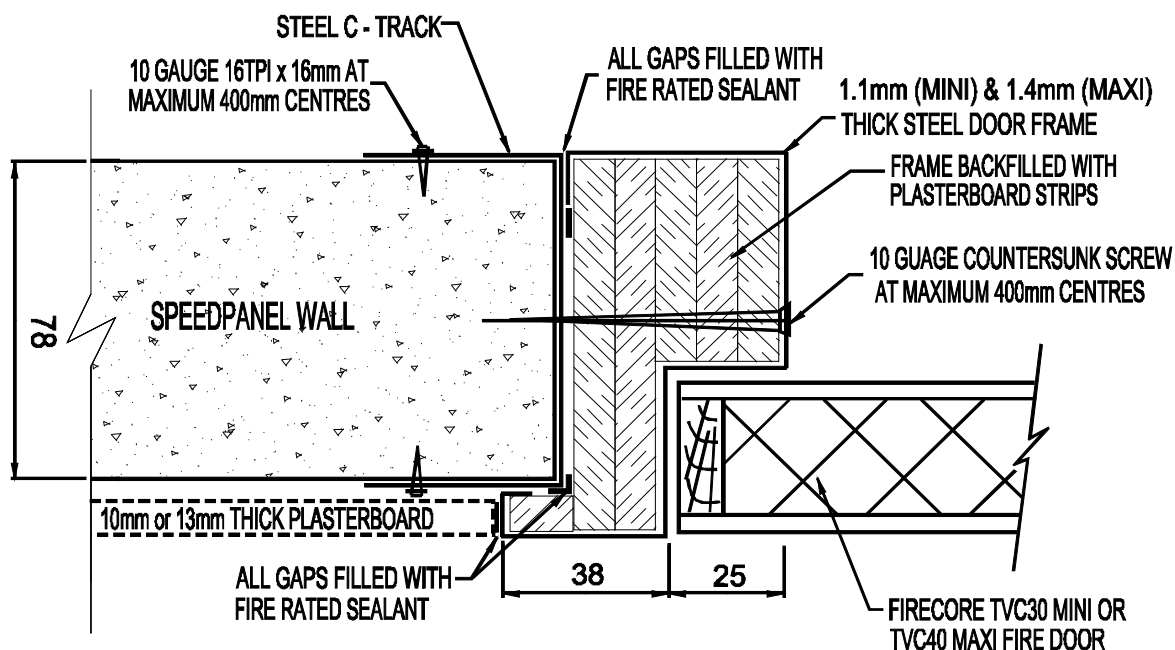
FRAME BUILT-INTO SPEEDPANEL WALL FRAME FIXED TO C-TRACK WITH COUNTERSUNK SCREW

TVC-Core Metal Door Frame Standard Installation

• Speedpanel Wall Systems - Up to Two Hour (FCO-3110A) – con'd



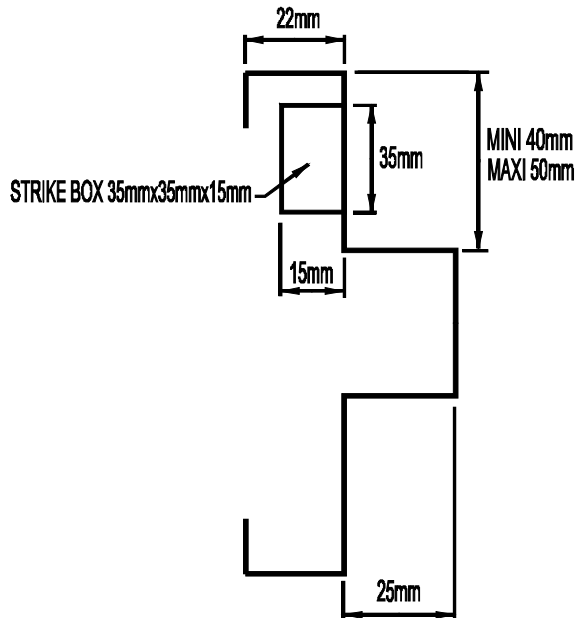
FRAME SLIDE-INTO SPEEDPANEL WALL WITH SEPARATE FIXING ANGLES



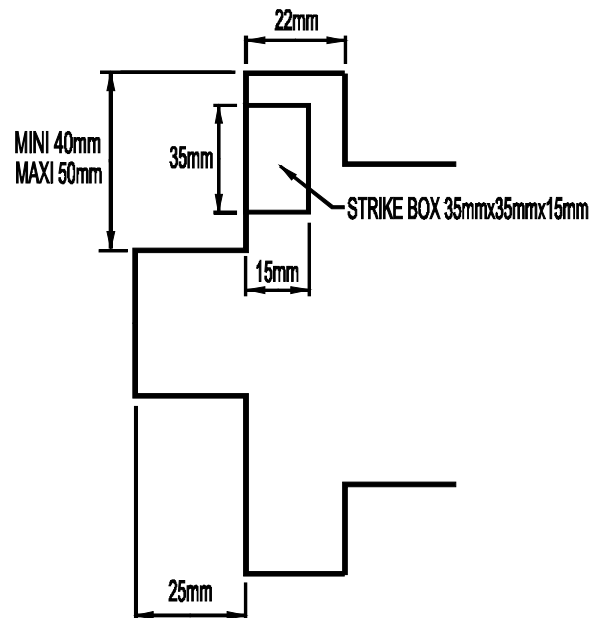
FRAME SLIDE-INTO SPEEDPANEL WALL FRAME FIXED TO C-TRACK WITH COUNTERSUNK SCREW

TVC-Core Metal Door Frame Standard Installation

- **Metal Door Frame decreased width of architrave from 38mm to 22mm - Up to Four Hour (FCO-3000)**



STANDARD FRAME SECTION VIEW

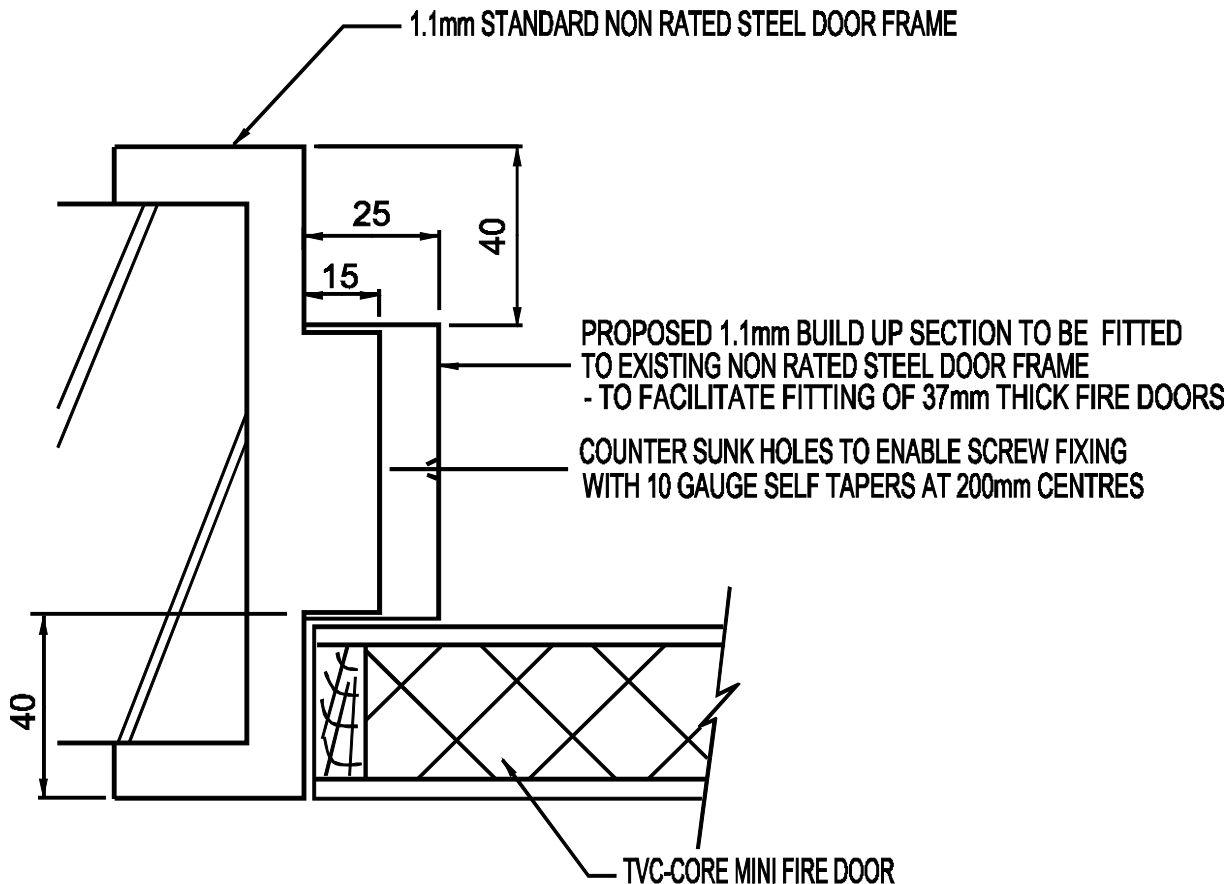


PARTITION FRAME SECTION VIEW

- **NOTE**
 1. Mini Fire Doors – Frames are 1.1mm thick Zincanneal, Galvanized & Stainless Steel door frames and 100mm x 75mm x nom. 2.5mm thick heavy duty hinges to be used
 2. Maxi Fire Doors – Frames are 1.4mm thick Zincanneal, Galvanized & Stainless Steel door frames and 100mm x 100mm x nom. 2.5mm thick heavy duty hinges to be used
 3. Steel frame to be backfilled with concrete or mortar into Masonry wall, plasterboard strips & plaster into Plasterboard wall
 4. Complies with AS 1905.1-2005 & tested in accordance with AS 1530.4-1997 & AS 1530.4-2005

TVC-CORE FIRE DOORS STEEL FRAME BUILD UP

- **Mini Non Fire Rated Steel Frame Build Up To Mini Fire Rated Steel Frame (Screw Fixed)**

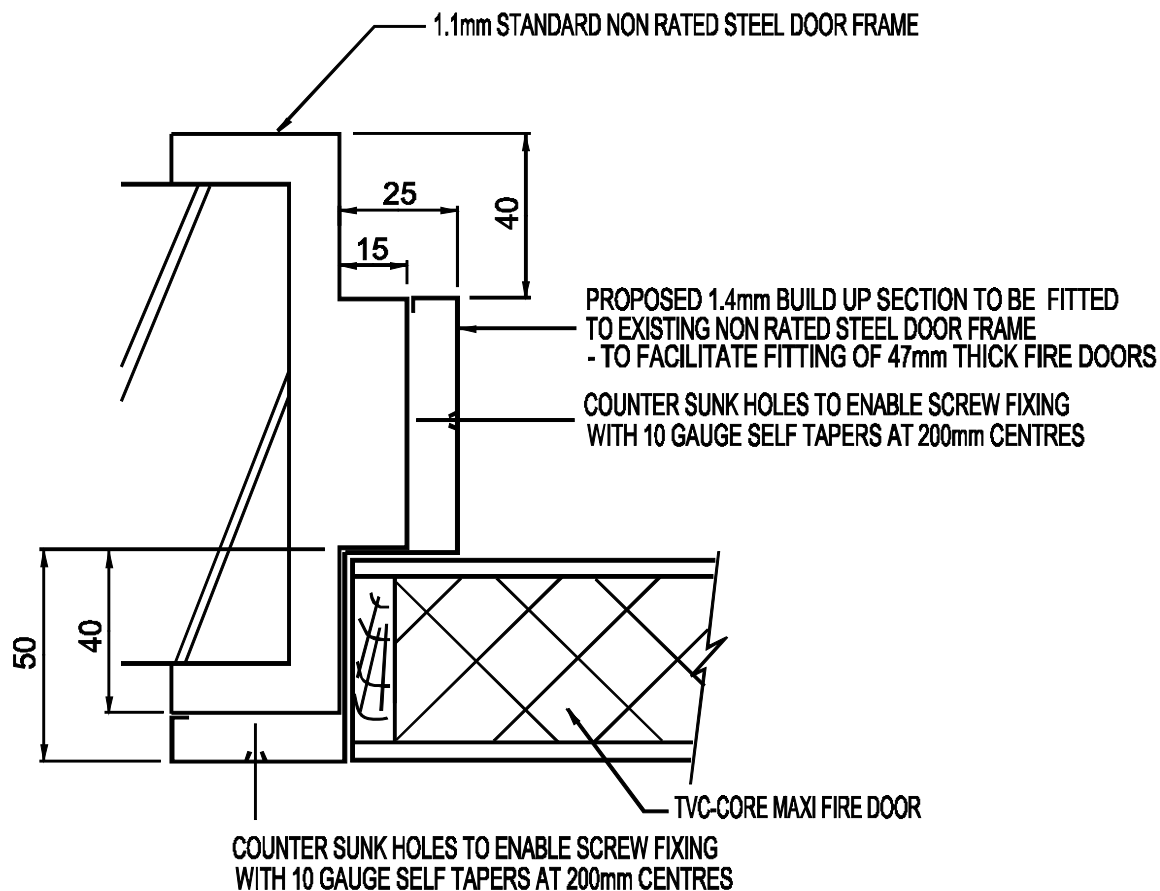


DOOR AND FRAME SECTIONAL PLAN VIEW

- **NOTE**
 1. Suitable for Mini non-fire rated steel frame build up to Mini fire rated frame
 2. Suitable for Single steel door frame
 3. Suitable for both plasterboard partition & masonry walls
 4. The frame and build up section should be required backfilled with concrete or mortar into Masonry wall, plasterboard strips & plaster into Plasterboard wall in accordance with AS 1530.4-2005
 5. The build up section could be use where it is not possible to weld sections to existing door frames
 6. All gaps and holes to be filled with fire rated sealant
 7. Approval for frame reveal size up to: Single door 2400mm x 1200mm
 8. Approval for Fire Resistance Level: -/120/30
 9. Reference Numbers: FCO2669

TVC-CORE FIRE DOORS STEEL FRAME BUILD UP

- **Mini Non Fire Rated Steel Frame Build Up To Maxi Fire Rated Steel Frame (Screw Fixed)**

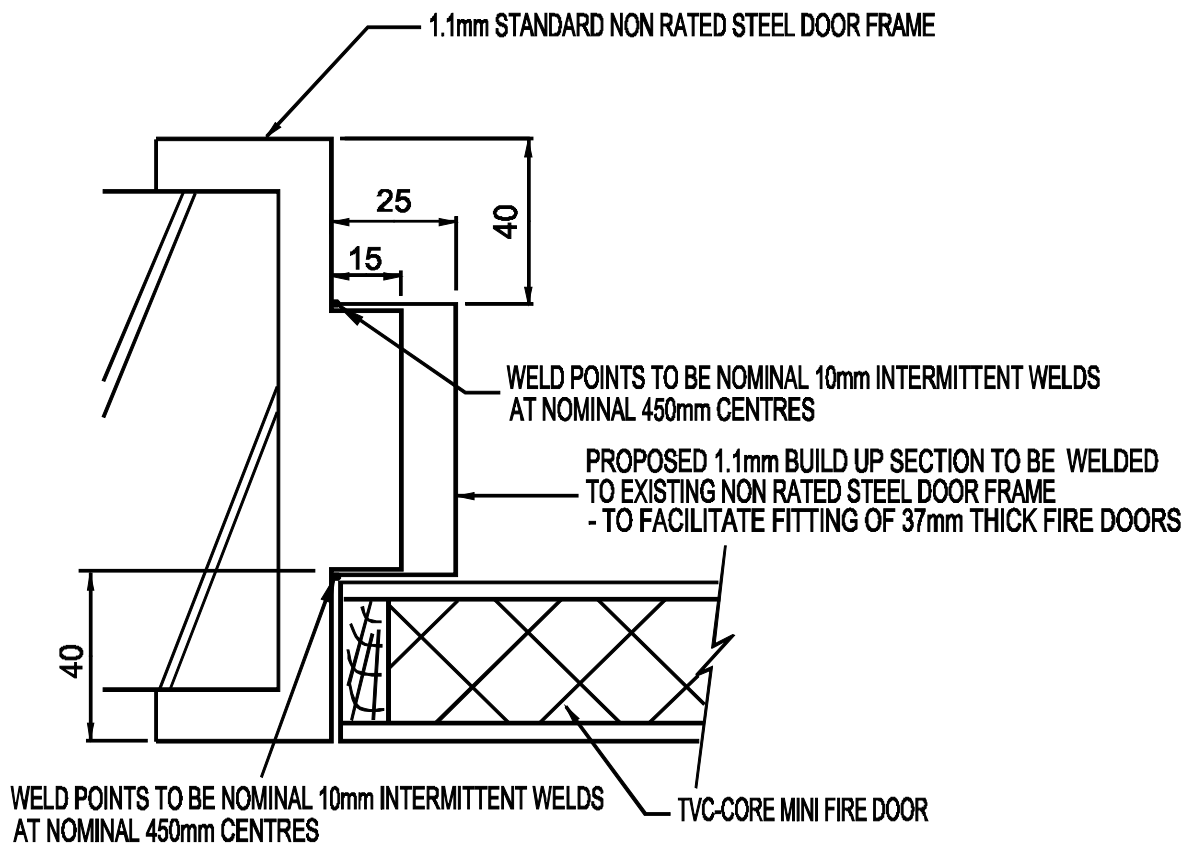


DOOR AND FRAME SECTIONAL PLAN VIEW

- **NOTE**
 1. Suitable for Mini non-fire rated steel frame build up to Maxi fire rated frame
 2. Suitable for Single and Double pair steel door frame
 3. Suitable for both plasterboard partition & masonry walls
 4. The frame and build up section should be required backfilled with concrete or mortar into Masonry wall, plasterboard strips & plaster into Plasterboard wall in accordance with AS 1530.4-2005
 5. The build up section could be use where it is not possible to weld sections to existing door frames
 6. All gaps and holes to be filled with fire rated sealant
 7. Approval for frame reveal sizes up to: Single Door 2400mm x 1200mm
Double Door 2400mm x 2400mm
 8. Approval for Fire Resistance Level: -/120/30
 9. Reference Numbers: FCO2669

TVC-CORE FIRE DOORS STEEL FRAME BUILD UP

- **Mini Non Fire Rated Steel Frame Build Up To Mini Fire Rated Steel Frame (Welded)**

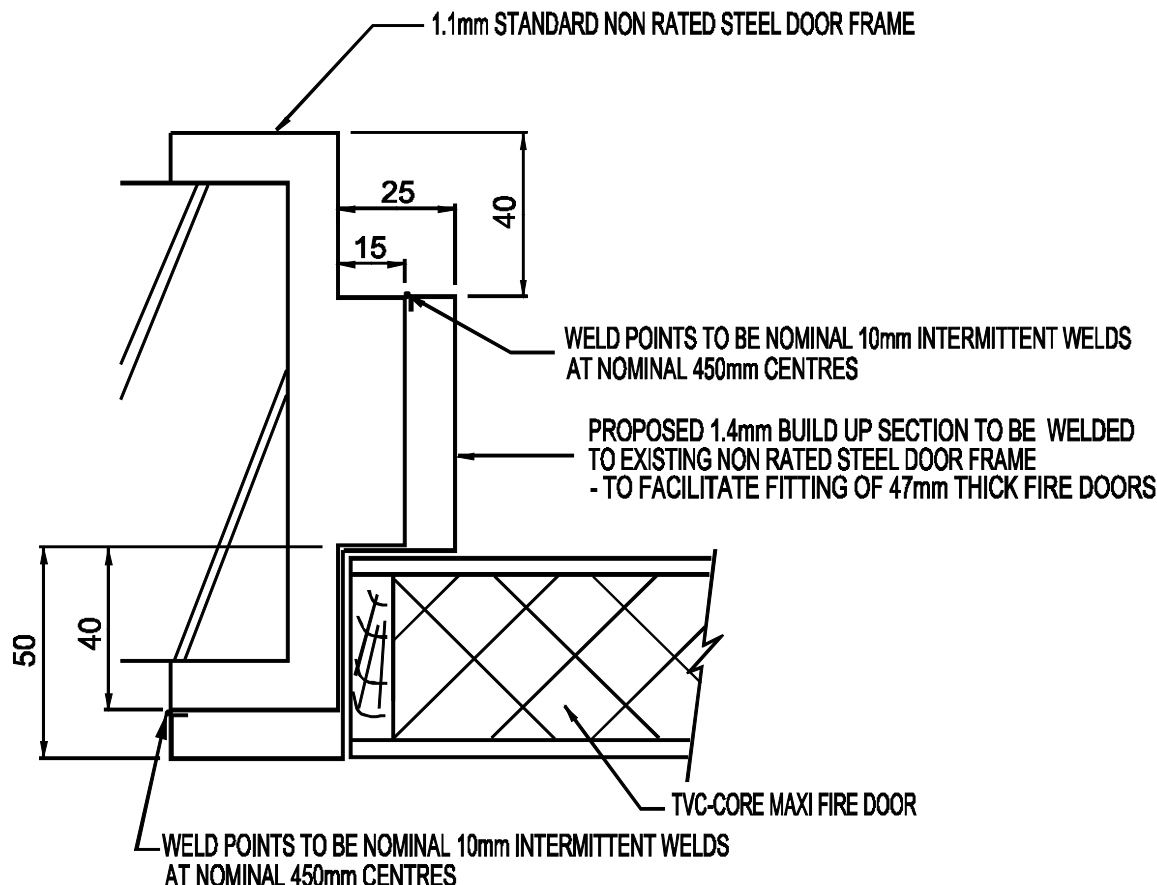


DOOR AND FRAME SECTIONAL PLAN VIEW

- **NOTE**
 1. Suitable for Mini non-fire rated steel frame build up to Mini fire rated frame
 2. Suitable for Single steel door frame
 3. Suitable for both plasterboard partition & masonry walls
 4. The frame and build up section should be required backfilled with concrete or mortar into Masonry wall, plasterboard strips & plaster into Plasterboard wall in accordance with AS 1530.4-2005
 5. The build up section to be welded to existing door frame and weld points to be nominal 10mm intermittent welds at nominal 450mm centers
 6. All gaps and holes to be filled with fire rated sealant
 7. Approval for frame reveal size up to: Single door 2400mm x 1200mm
 8. Approval for Fire Resistance Level: -/120/30
 9. Reference Numbers: FCO2669

TVC-CORE FIRE DOORS STEEL FRAME BUILD UP

- **Mini Non Fire Rated Steel Frame Build Up To Maxi Fire Rated Steel Frame (Welded)**



DOOR AND FRAME SECTIONAL PLAN VIEW

- **NOTE**
 1. Suitable for Mini non-fire rated steel frame build up to Maxi fire rated frame
 2. Suitable for Single and Double pair steel door frame
 3. Suitable for both plasterboard partition & masonry walls
 4. The frame and build up section should be required backfilled with concrete or mortar into Masonry wall, plasterboard strips & plaster into Plasterboard wall in accordance with AS 1530.4-2005
 5. The build up section to be welded to existing door frame and weld points to be nominal 10mm intermittent welds at nominal 450mm centers
 6. All gaps and holes to be filled with fire rated sealant
 7. Approval for frame reveal sizes up to: Single Door 2400mm x 1200mm
Double Door 2400mm x 2400mm
 8. Approval for Fire Resistance Level: -/120/30.
 9. Reference Numbers: FCO2669